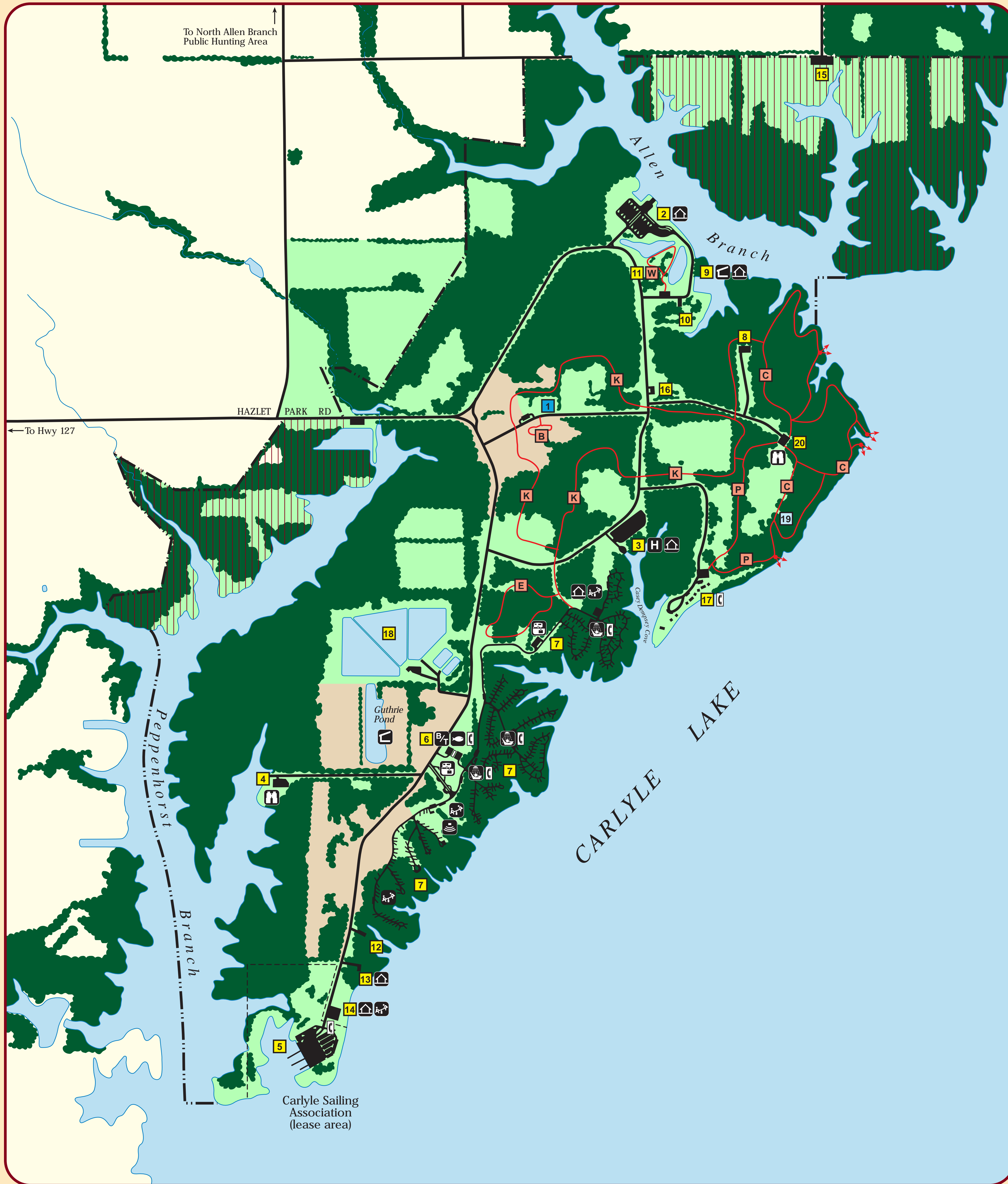




ELDON HAZLET STATE PARK

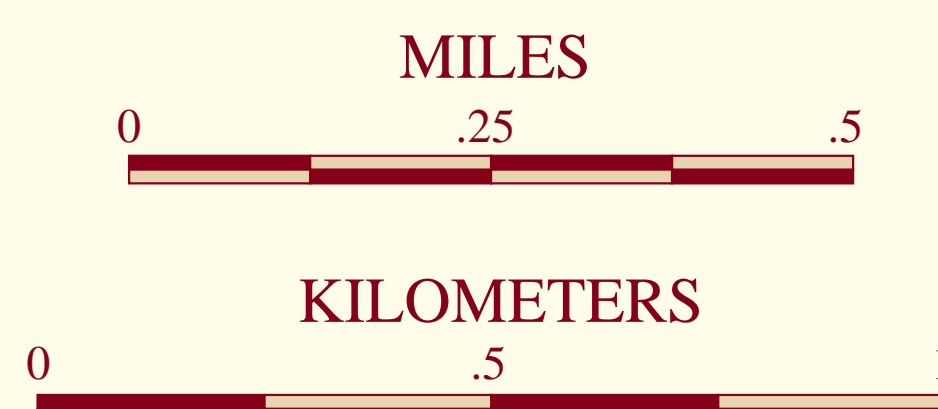
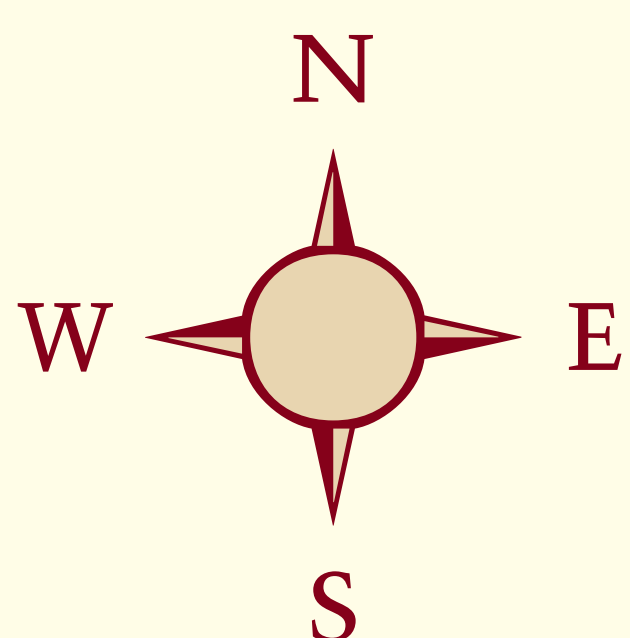


KEY

- YOU ARE HERE
- forest
- grassland
- Native Prairie Restoration
- public hunting area
- trail
- site boundary
- primary road
- lease boundary
- levee
- telephone
- parking lot
- scenic overlook
- picnic shelter
- fishing pier
- fish cleaning station
- amphitheater
- playground
- dump station
- viewing area
- highwater boat ramp

USE AREAS

- 1 Administration Office, Maint. Bldg.
- 2 Allen Branch Day Use, Boat Access Area
- 3 Apache Day Use, Boat Access Area
- 4 Peppenhorst Boat Access Area
- 5 Sailboat Access Area
- 6 Concession Store
- 7 Illini Campground
- 8 Osage Youth Group Campground
- 9 Chippewa Day use Area
- 10 Ottawa Day Use Area
- 11 Wetland Education Area
- 12 Shawnee Day Use Area
- 13 Chickasaw Day Use Area
- 14 Olympic Day Use Area
- 15 North Allen Branch Public hunting area
- 16 Archery Range
- 17 Carlyle Lakefront Cottages
- 18 Fish Rearing Ponds
- 19 Burnside Cemetery
- 20 Hiking Trail Access Area
- C Cherokee Trail
- K Kaskaskian Trail
- P Pawnee Trail
- E Eagle Trail
- B Bluestem Trail
- W Wetland Trail



SITE INFORMATION

Emergency:

- Phone site office at 618/594-3015, or phone 911. Give on-site location.
- For additional information contact site office: 20100 Hazlet Park Rd Carlyle, IL 62231, or phone 618/594-3015.

Rules:

- Groups of 25 or more must register at the site office.
- One responsible adult must accompany each group of 15 minors.
- All pets must be leashed.

Thank You:

- Thank you. We hope you enjoy your stay. Remember, take only memories, leave only footprints.